

Valve does not close

Possible cause:

- Internal space of the valve is dirty.
- Small control bore in the diaphragm blocked.

After occurrence of an external fire

- After an external fire, check the equipment and safety shut-off device.
- If there is visible damage, replace shut-off device!

9. SPARE PARTS**CAUTION!**

Risk of injury and/or damage by the use of incorrect parts!

Incorrect accessories and unsuitable spare parts may cause injuries and damage the device and the surrounding area.

- Use original accessories and original spare parts from Bürkert only.

9.1. Ordering spare parts**Replacement part sets**

When ordering replacement part sets, quote the sets SET1, SET 3 or SET 7 and the identification number of the device.

- See replacement part sets *9.2. Overview of replacement part sets*.
- The identification number of the device can be found on the rating plate. See also chapter *6.3. Rating plate description*.

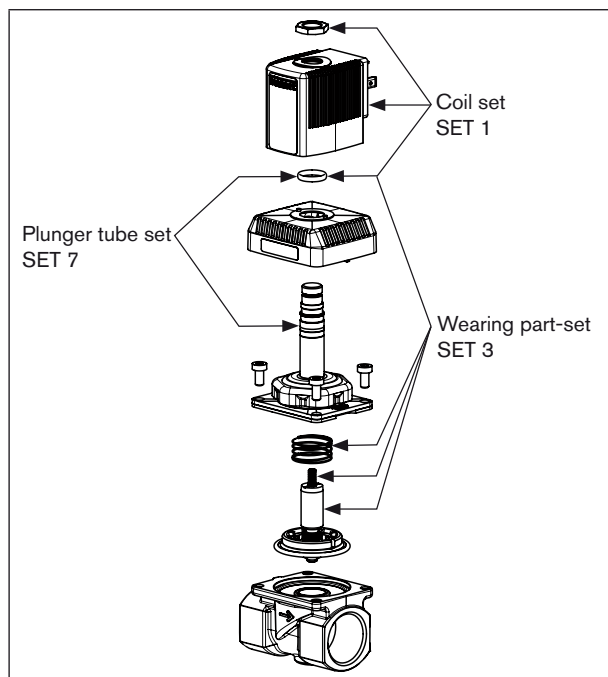
9.2. Overview of replacement part sets

Fig. 4: Overview of replacement part sets

10. PACKAGING, TRANSPORT, STORAGE**NOTE!****Transport damages!**

Inadequately protected equipment may be damaged during transport.

- During transportation protect the device against wet and dirt in shock-resistant packaging.
- Avoid exceeding or dropping below the allowable storage temperature.

Incorrect storage may damage the device.

- Store the device in a dry and dust-free location!
- Storage temperature: -40 ... +80 °C.